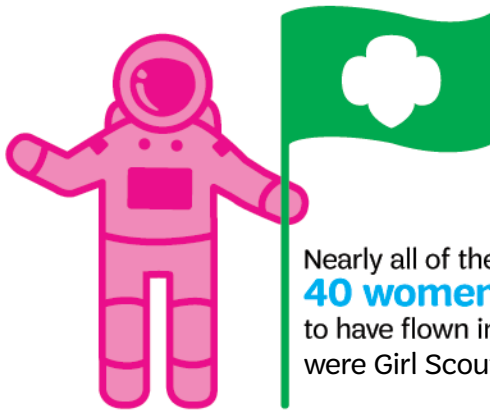
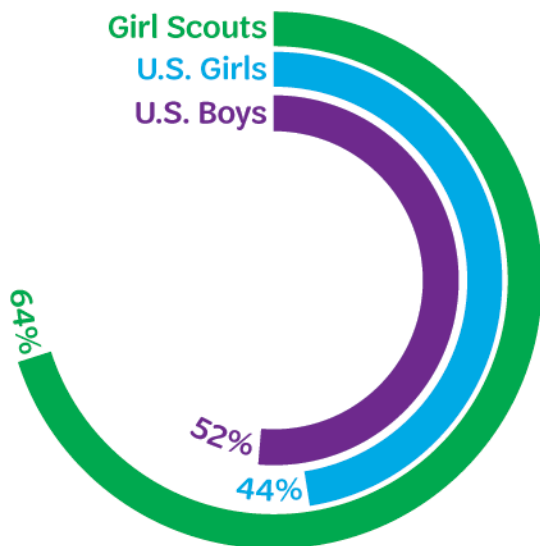


How Girl Scouts Measure Up



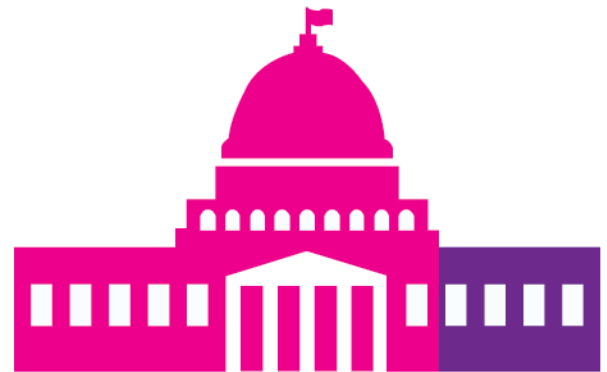
Nearly all of the **40 women** to have flown in space were Girl Scouts.

Girl Scouts are more likely to consider themselves leaders compared to their peers:

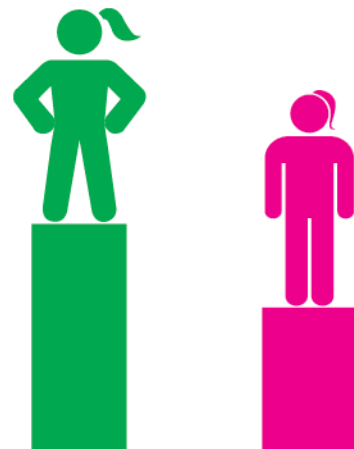


1 out of 2 businesswomen in the U.S. were Girl Scouts.

Each year, Girl Scouts provide more than **75 million hours** of service to improve their communities.



75% of current female senators were Girl Scouts.



63% of former Girl Scouts consider themselves competent and capable, compared to **55%** of non-Girl Scouts.

According to the World Bank, investments in women and girls strengthen countries'...



Sources: Ban Bossy Youth Leadership Poll (Girl Scout Research Institute, 2014); Engendering Development Through Gender Equality in Rights, Resources, and Voice (World Bank, 2001); Girl Scout Alumnae Businesswomen Report (GSRI, 2015); Girl Scout Alumnae by the Numbers (GSRI, 2015); Girl Scouting Works: The Alumnae Impact Study (GSRI; 2012).

www.girlscouts.org/likeagirlscout

